

NHERI Council Monthly Meeting No. 11, Y-7
May 4, 2023 11:30 – 12:30 PM Eastern (8:30 to 9:30 AM Pacific)

NHERI Council Meetings

Title: NHERI Council - Spring 2023

Location: <https://DesignSafe-ci.zoom.us/j/93821688719>

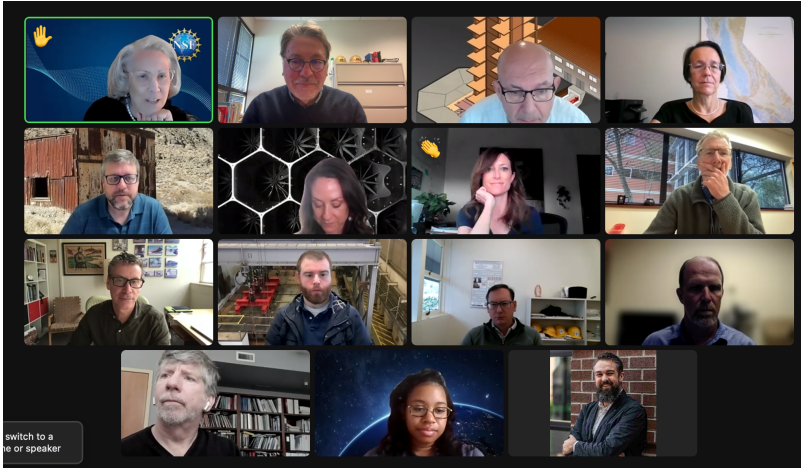
When: May 4th, 11:30 AM to 12:30 PM Eastern

Attending:

- Oregon State University: Dan Cox (EF Dir.) Hinsdale
- University of California, Berkeley: Matt Schoettler (Assoc. Dir. – Ops), Stanford University: Greg Deierlein (Co-Dir), SimCenter
- University of California, Davis: Dan Wilson (Assoc. Dir.) CGM
- University of California, San Diego: Joel Conte (EF Dir.) LHPOST
- University of Colorado Boulder: Lori Peek (Dir., CONVERGE)
- University of Florida: Jennifer Bridge (EF Dir. and Council Chair) Powell Lab
- University of Texas at Austin: Ellen Rathje (CI Dir.) DesignSafe-CI
- University of Texas at Austin:
- University of Washington: Joe Wartman (EF Dir. and Council Vice-Chair) RAPID
- National Science Foundation: Joy Pauschke (Prog. Dir, NHERI) and Malia Williams (Contracts)
- Purdue University: Julio Ramirez (NCO Dir., Council Secretary), and Dan Zehner (NCO Sch./Ops. Coord.)
- Florida International University: Steve Diaz (Site Operations Manager) WOW
- Lehigh University: Chad Kusko (Facility Manager), and Joe Saunders, Ph.D. Associate Director of Operations (jms815@lehigh.edu) ATLSS
- Guests: None

Minutes

1. Attendance (Julio)



Further information on the previous page. In addition, Joy Pauschke introduced Malia Williams who is replacing Erica Stein, and Chad Kusko introduced Joe Saunders as the new operations manager for the NHERI@Lehigh.

2. (5 min) Review and Approval of Minutes (previously distributed) Meeting No. 10, 4/6/23 in Y-7 (Jennifer)

Approved Minutes posted at: <https://www.designsafe-ci.org/facilities/nco/governance/nheri-council/>

Minutes were approved as distributed without objection.

3. (5 min) Old Business –

a. Post Summit Activities

i. Next NHERI-wide meeting, 2024 (Jennifer, Julio, 5 min)

- The core group from the Council continues to work on the identification of venue in the DC area, and “save the date” to share with the community soon this Summer. At the suggestion of Greg Deierlein the leadership of Sec. 4 of the NAE will be contacted to explore partnership opportunities including the possible use of the NAS Kavli auditorium.
- Work on the program also continues with Dan Cox reaching out to members of the community to identify possible theme(s) for the meeting. Lori suggested to once again reach out to other Federal Agencies.

4. (25 min) New Business - Next steps for strengthening NHERI community

a. Lowering Barriers to Entry for NHERI Research

i. UC Davis "laddering process" (Dan Wilson)

Dan presented a number of strategies aimed that facilitating entrance to the facility for early career researchers or just researchers new to the facility. One of the strategies aims at encouraging experience researchers to bring an early career one as part of the team to be mentored by an experienced researcher. The facility then returns back \$5000 for training to the team. A paper has been authored by one of the teams using the UC Davis facility (below) and can be downloaded at this link:

<https://www.taylorfrancis.com/chapters/edit/10.1201/9780429438660-2/example-effective-mentoring-research-centres-bronner-wilson-ziotopoulou-darby-sturm-raymond-boulanger-dejong-moug-bronner>



The screenshot shows a digital chapter page. On the left is a book cover for 'Physical Modelling in Geotechnics'. The main title is 'An example of effective mentoring for research centres'. Below the title are the authors: C.E. Bronner, D.W. Wilson, K. Ziotopoulou, K.M. Darby, A. Sturm, A.J. Raymond, R.W. Boulanger, J.T. Dejong, D.M. Moug, J.D. Bronner. The book is 'Physical Modelling in Geotechnics, Volume 1', 1st Edition, published in 2018 by CRC Press, 12 pages, ISBN 9780429438660. On the right, there is a 'DOWNLOAD' button (0.59 MB) and a 'GO TO ROUTLEDGE.COM' button. A note at the bottom right says 'To purchase a print version of this book for personal use or request an inspection copy >>'.

At the NHERI@UCDAVIS site, guidance is provided for new Principal Investigators from academia or industry who are considering using the CGM facilities for the first time may have a wide range of questions and concerns. The CGM provides confidential consultations regarding proposal ideas, with advice covering aspects of the scientific hypotheses, experimental designs, procedures, technologies, costs, schedule, and proposal writing.

The CGM has also established the CGM Mentors for New Users, a volunteer group of experienced CGM users, who supplement the CGM in providing confidential consultations to potential new users regarding proposal ideas.

ii. FIU collaborator profiles (Steve Diaz)

The facility faculty and professional staff are committed to the success of early career researchers. They have a number of resources dedicated to this goal. These include workshops and a number of presentations and other resources. NHERI Wall of Wind (WOW) Experimental Facility (EF) encourages requests from faculty (potential EF users) to attend Research Planning Workshops, throughout the year, at the WOW EF in Miami, FL. The Research Planning Workshops are designed for individuals and smaller groups (2-3) to help them determine the best way to engage with the WOW facility while developing NSF proposals. This one-day workshop can be scheduled any time of the year (<https://fiu.designsafe-ci.org/events/upcoming-events/>)

iii. NHERI FAQs (Jennifer)

This item will be on the agenda for the next meeting, and the list is attached to these minutes.

iv. Discussion (all)

b. (5 min) Scheduling discussion topics for future Council Meetings (Jennifer).

i. Team Science Study (Dan)

ii. Revisit NHERI Impact Metrics

iii. Others

- c. (5 min) Schedule of Future Council Meetings (Julio)-- proposed dates June 8, July 6, and August 3 same time (?)

Agreed to meet on the date above at the same time from 11:30 AM to 12:30 PM. Julio will distribute the zoom meeting details and individual calendar invitations.

- d. Other New Business

Election of the new vice chair for the next term or to extend the current officers one more 1-year term.

5. Adjourn

Meeting adjourned at 12:30 PM. Julio moved and Lori seconded the motion.

Commented [JR1]: Here the one-year term as chair and vice chair is ending for both you and Joe. This means that Joe becomes the new chair and we need to elect the next vice chair. Alternatively, the council with the agreement of the current officers may extend the appointment one-year.

NHERI Frequently Asked Questions

General

- Am I limited to submitting proposals to specific NSF directorates/programs to use NHERI facilities?
- Does my project need to be directly related to natural hazards to take advantage of NHERI facilities?
- Do I need to include a NHERI site PI/co-PI as a co-PI on my proposal?
- How can I convince a proposal review panel that I can carry out the proposed testing if I don't have any experience doing similar experiments?
- What is the best way to find collaborators?
- I'm an engineering researcher. How do I find and engage social science collaborators?
- Can I still use a NHERI facility if my project is funded by another agency or industry?
- How can I include industry partners in my NHERI project?

NHERI site-specific (i.e., sites will have potentially different answers)

Proposal preparation:

- How much does it cost to do experiments with your site?
- How many days/weeks/months can I use your facility?
- Do you have facilities information I can include in my proposal?
- Do you have a data management plan I can use in my proposal?
- Can you facilitate K-12 outreach for my proposal?
- Will you review my proposal?
- What is a payload project and what is the process for getting one started?

Project planning

- How far out are you booking experiments? Is the schedule on DesignSafe up to date?
- How far in advance do you need to know about my experiment?
- Can I run/supervise my experiments remotely?
- Can I use my own instrumentation?

Data publishing

DesignSafe FAQs: <https://www.designsafe-ci.org/faq/>

Data curation and publishing FAQs: <https://www.designsafe-ci.org/rw/user-guides/curating-publishing-projects/faq/>

- Is sending my data to DesignSafe the same thing as publishing it?
- Should I wait until my journal article(s) is published before publishing the data (so I don't get scooped)?
- Can I publish my data from the same project in more than one data publication?
- Can I edit my published data once it is published?
- How do I go about writing a data paper?
- What is the process for re-using data from DesignSafe?