

NHERI Council Monthly Meeting No. 2, Y-3- Date: 9/12/2018- 4:00 to 5:00 PM ET

Zoom Meeting Details:

Topic: NHERI Council - Fall 2018 Series

Time: Sep 12, 2018 4:00 PM Eastern Time (US and Canada)

Sep 12, 2018 4:00 PM

Oct 3, 2018 4:00 PM

Nov 7, 2018 4:00 PM

Dec 5, 2018 4:00 PM

Please download and import the following iCalendar (.ics) files to your calendar system.

Monthly: <https://DesignSafe->

[ci.zoom.us/meeting/644875759/ics?icsToken=afd60fb367ec34a8d21e31ec6571cff6e2df38098949d33073cf2a2f714478bf](https://DesignSafe-ci.zoom.us/meeting/644875759/ics?icsToken=afd60fb367ec34a8d21e31ec6571cff6e2df38098949d33073cf2a2f714478bf)

Join from PC, Mac, Linux, iOS or Android: <https://DesignSafe-ci.zoom.us/j/644875759>

Or iPhone one-tap :

US: +16699006833,,644875759# or +16465588656,,644875759#

Or Telephone:

Dial(for higher quality, dial a number based on your current location):

US: +1 669 900 6833 or +1 646 558 8656

Meeting ID: 644 875 759

International numbers available: <https://zoom.us/u/cau9txY3Y>

Attending: R. Boulanger (Chair and CGM EF); A. Chowdhury (WOW EF); J. Conte (LHPOST EF); D. Cox (LWF... EF); S. Govindjee (SimCenter); Jennifer Bridge and F. Masters (Vice-Chair, BLWT... EF); J. Ramirez (Secretary, NCO); E. Rathje (DesignSafe-CI); J. Ricles; K. Stokoe (TREX... EF); J. Wartman (RAPID EF); NSF: J. Pauschke and R. Dillon-Merrill; Guests:

Minutes

1. Attendance, Review and Approval of Minutes (previously distributed) of Meeting No. 1 (August 1, 2018) in Y-3 (Ross) -- **Approved Minutes:** <https://www.designsafe-ci.org/facilities/nco/governance/nheri-council/>

Minutes were approved with an editorial friendly amendment.

2. Facility Items:

- a. NCO- (Julio)

- i. New NHERI Facility- CONVERGE

Julio shared Lori's slides on this new NHERI resource (slides and notes attached to these minutes). Remarks from Robin Dillon-Merrill and Joy Pauschke followed to provide context and further clarify this new resource role and scope. Afterwards, the floor was open for questions and remarks from the Council. With regard to participation on Council meetings, NSF left that to the Council. In addition, Joy clarified that REUs from CONVERGE potentially participating in the NHERI REU program would not need to be supported by the NCO award. After additional discussion regarding the invitation to the CONVERGE PI to join the Council meetings the action item below was agreed upon.

Action item: Julio to extend an invitation on behalf of the Council to Lori Peek or her representative to join the regular monthly meetings.

- ii. User Satisfaction Survey Y2 results and NIAC Annual Report. The NIAC report is attached to the Agenda. The User Satisfaction Survey is posted on designsafe-ci at: <https://www.designsafe-ci.org/community/user-forum/>

Julio invited the Council to review the report and asked that the item be placed on the Agenda for the next meeting. He also indicated that the User Forum Leader of the Survey, Prof. Liesel Ritchie from Oklahoma State University could be invited to join a future Council meeting. The Council supported this action.

Action item: Julio to extend an invitation to Liesel Ritchie to join the next Council meeting.

- iii. **Status of Supplement Requests in NHERI Council Annual Work Plan Year 3.**
NSF has approved the funding and the NCO will be coordinating the organization of the workshop. The next step is to convene the organizing committee. The proposal is attached to these minutes. Julio will update the Council in the coming meetings on the progress of this activity. The tentative date is sometime in March of 2019 and the venue will be somewhere in the Washington DC area, tentatively close to NSF headquarters.

- iv. **Update on EUCentre/NHERI partnership first planning meeting.**
The first organizing committee meeting is planned for October 29, 2018 in the DC area. A list of initial participants and a proposed Agenda received on 9-18 are included with these minutes.

Action Item: Please provide Julio input on participants and proposed Agenda soon.

- v. **Interest in a session or workshop during the EERI 2019 Annual Meeting in Vancouver, March 5, 2019-March 8, 2019?**

Action Item: Joe and Ross proposed to follow up with EERI on a possible session/workshop on the user research activities related to the NHERI facility.

- b. **DesignSafe-CI- (Ellen)**

Ellen reported that there is a slack channel open for the Florence event and congratulated several facilities for submitting their publications list and invited the rest to follow suit. Several items related to Florence were mentioned, in particular the upcoming podcast hosted by the NCO FSOC, Dan Zehner, with Forrest Masters and a news item on designsafe-ci being worked on between the NHERI-NCO communications specialist Marti LaChance and Forrest Masters. Hedda from designsafe will push this item as a top priority as soon as it is ready.

- c. **University of Florida- (Forrest)**

- i. **NSF Big Idea Competition**

Forrest joined from the road as he was on his way to make wind measurements of the Florence event. He asked for patience as work related to Florence is ongoing, but he has begun thinking about the NSF Big Idea competition. More soon!

- d. **Other Facility Reports**

- 3. **NSF Items (Joy Pauschke)**

- **Congratulations to the RAPID facility on becoming operational.**
- **EFs to be reviewed in October, please submit documents required.**
- **User Satisfaction Survey Year 2- asked the Council to take a serious look at it and act as needed.**

- 4. **Ongoing Action Items**

- a. **Action Item: raise awareness about the availability of the Science Plan (all)**

- 5. **Next Meeting- Oct 3, 2018 4:00 PM**

- 6. **Adjourn**

Meeting adjourned at 5:06 PM Eastern.

CONVERGE

Coordinated Social Science, Engineering, and Interdisciplinary Extreme Events Research

A National Science Foundation-Natural Hazards Engineering Research Infrastructure (NSF-NHERI) Resource



Lori Peek, Ph.D. – Principal Investigator
Professor, Department of Sociology
Director, Natural Hazards Center
University of Colorado Boulder



What is Convergence?

Convergence research tends to be driven by a specific and compelling problem—such as rising disaster losses—and it *requires the integration of knowledge, theories, methods, and expertise from different disciplines*—such as within the social sciences and engineering—to achieve scientific breakthroughs that otherwise would not be possible. Convergence research is designed to *catalyze scientific discovery* and innovation while also *helping to solve complex societal issues and environmental challenges*.

See: National Research Council,

<https://www.nap.edu/catalog/18722/convergence-facilitating-transdisciplinary-integration-of-life-sciences-physical-sciences-engineering>

National Science Foundation,

<https://www.nsf.gov/od/oia/convergence/index.jsp>

Why CONVERGE?

Convergence represents *a coming together* – for the first time – of the NSF-EER platforms and various NHERI facilities.



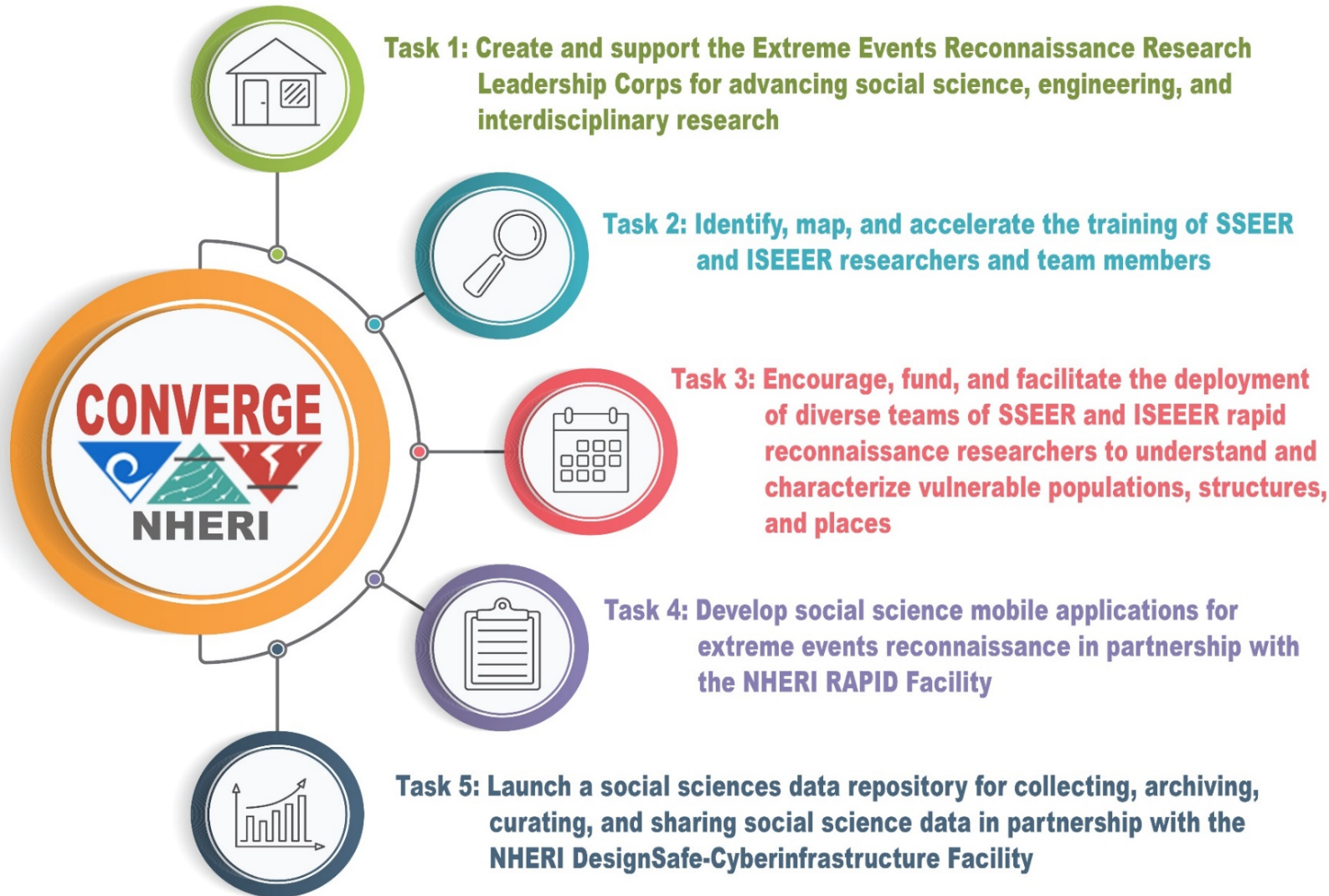
CONVERGE – headquartered at the Natural Hazards Center at the University of Colorado Boulder – is a NHERI resource dedicated to *linking* engineering, social science, and interdisciplinary research communities through various networks and research platforms; *developing* and *sharing* best practices for the ethical conduct of research; and *promoting* social science, engineering, and interdisciplinary natural hazards research to reduce vulnerability.



CONVERGE

Coordinated Social Science, Engineering, and Interdisciplinary Extreme Events Research

A National Science Foundation-Natural Hazards Engineering Research Infrastructure (NSF-NHERI) Resource



CONVERGE Leadership Corps and the NSF-EER's

Over the decades, disasters have grown in terms of their number, frequency, and intensity. In response, hazards and disaster research communities in engineering and the social sciences have begun organizing under Extreme Events Research (EER) networks.

At present, the National Science Foundation supports several major EER networks including the Geotechnical Extreme Events Reconnaissance (GEER) association, the Social Science Extreme Events Research (SSEER) network, the Structural Engineering Extreme Events Reconnaissance (StEER) network, the Nearshore Extreme Events Reconnaissance (NEER) association, and the Interdisciplinary Science and Engineering Extreme Events Research (ISEEER) network.

The NHERI-RAPID Facility allows researchers to rent state-of-the-art reconnaissance equipment at affordable prices, and NHERI DesignSafe provides cyberinfrastructure to support and facilitate hazards research and reconnaissance activities.

The leaders of these EER's and from the NHERI facilities have come together to form the first-ever engineering and social science NHERI CONVERGE Leadership Corps for reconnaissance research.





SSEER
SOCIAL SCIENCE
EXTREME EVENTS
RESEARCH

SSEER is a National Science Foundation-supported network and online platform for social science hazards and disaster researchers.

The purpose of SSEER is to *identify* and *connect* social science researchers to one another, to interdisciplinary teams, and to communities at risk to and affected by hazards and disasters and to *advance* social science research.





Objectives:

SSEER represents a first attempt to generate a **census**, or an official count, of social scientists who study hazards and disasters. This will help us, as a community, to:

- Create a **novel, systematic database**—representing the total number of active researchers and the range of disciplines, experiences, and types of expertise of those involved in the social science hazards and disaster research community
- Increase the **visibility and positive impact** of the social science hazards and disaster community by publicly articulating who we are, what we know, and how we can use our knowledge and skills to reduce hazards and disaster losses, especially among the most vulnerable people
- **Democratize the research and engagement process** by identifying all the members of the research community and, subsequently, extending the possibilities for interdisciplinary collaboration among a more diverse range of researchers
- Work together **before** disaster strikes, by identifying researchers by discipline and areas of expertise
- Coordinate more effectively **during and immediately following a disaster** with locally-affected researchers, government response agencies, and teams launching new reconnaissance investigations
- Share the results of social science investigations **after** events to help reduce vulnerability, mitigate future losses, and promote social wellbeing
- **Collaborate** with researchers and practitioners to ensure that research is holistic, rigorous, and ethically-grounded



Funding:

Building upon the University of Colorado Boulder Natural Hazards Center's longstanding **Quick Response Research Program**, and with the funding support of the National Science Foundation, SSEER researchers will also have the opportunity to apply for funding to support research efforts to collect perishable data in the aftermath of disaster.

hazards.colorado.edu/research/quick-response





Please read this brief statement: “A Call to Social Scientists” for more background and context on SSEER:

hazards.colorado.edu/news/director/a-call-to-social-scientists

The form to join SSEER has been live since July: hazards.colorado.edu/join-SSEER

At present, over **300 social scientists** have completed the 7-minute survey! This information will allow us to generate the first **map**, spatially locating researchers, and detailed **census** of the social science hazards and disaster community.



Now that the SSEER survey form is live, a next step is to:

Open a call for researchers who are *interested* in joining interdisciplinary engineering and social science reconnaissance teams and to

Develop a database of researchers who have regularly engaged in interdisciplinary hazards and disaster research.

The **Science of Team Science** will inform all subsequent modules and resources that are developed to help foster interdisciplinary collaboration for the hazards and disaster research community.

CONVERGE

Coordinated Social Science, Engineering, and Interdisciplinary Extreme Events Research

Thank you for your time and attention and special gratitude to all CONVERGE partners, collaborators, and supporters!



Lori Peek, Ph.D. – Principal Investigator
Professor, Department of Sociology
Director, Natural Hazards Center
University of Colorado Boulder
Lori.Peek@Colorado.edu



Slide #1

Hello everyone. This is Lori Peek writing here, and I am so sorry that I cannot be there to join with you today. However, I am teaching a large 420+ student Introduction to Sociology course this semester, and it is during this time block!

Please know how grateful I am for Julio, who agreed to offer this brief overview and introduction to CONVERGE and an update on SSEER and ISEEER. The NSF Program Director for these grants, Robin Dillon-Merrill, is also on the call today and she has kindly offered to help respond to any questions or comments.

Slide #2

Per Julio's request, the objective of this presentation is to offer a brief introduction to CONVERGE, while also providing an update on the SSEER and ISEEER networks and platforms.

First, though, I wanted to note that I have had the honor of serving on the NHERI Scientific Plan Advisory Committee, and also on the NHERI RAPID Facility Scientific Advisory Committee. As such, I have been following the work of NHERI for some time – with great admiration and respect. It is a pleasure to have this opportunity to share this information with you today.

Slide #3

To begin, a few words on Converge research, which is one of the National Science Foundations "10 Big Ideas" initiative.

Please read Slide 3

Slide #4

In this specific instance, convergence is meant to denote *a coming together* of the engineering and social science communities through the NSF-supported extreme events research and reconnaissance networks, as well as the NHERI network. These communities have long been concerned with understanding and reducing hazards losses. The intent of CONVERGE is, in part, to advance the disciplinary and interdisciplinary scientific enterprise, while also to broaden engineering and social science applications.

Slide #5

CONVERGE was awarded one month ago to the day by NSF as a research grant.

There are five major tasks that are associated with CONVERGE, including:

Task 1: Create and Support the first-ever Extreme Events Reconnaissance Research Leadership Corps.

This Leadership Corps will include the leaders of GEER (David Frost), StEER (Tracy Kijewski-Correa), SSEER, and ISEEER (Lori Peek), RAPID (Joe Wartman and Jeff Berman), DesignSafe (Ellen Rathje).

The Leadership Corps is tasked with developing various best practice guidelines for reconnaissance research.

In addition, through CONVERGE, we will be working with the Center for Environmental Journalism at CU Boulder to advance the communications around the science of hazards and disaster research, especially during major deployments.

Task 2: Identify, map, and accelerate the training of social science and interdisciplinary researchers through SSEER and ISEEER.

In addition to the identifying and mapping of researchers, we will be developing a variety of training modules through CONVERGE focused on issues such as:

IRB Ethics Vulnerable Populations Mental Health

Task 3: Encourage and fund the deployment of SSEER and ISEEER Researchers – especially with a focus on the most vulnerable people and places.

Task 3 involves a partnership with the Bill Anderson Fund and the NSF INCLUDES Minority Surge Capacity in Disasters group, to ensure that next generation scholars from historically underrepresented groups will have the opportunity to contribute.

Task 4: Work with the NHERI RAPID Facility to advance mobile applications for social science and interdisciplinary reconnaissance.

Task 5: Collaborate with NHERI DesignSafe-Cyberinfrastructure to build a social science and interdisciplinary data model.

In the interest of time, this presentation will not go into great depth with any one of these tasks, but please know that there are many subtasks and deliverables associated with each one of these tasks.

Slide #6

As noted on the prior slide, several of the Tasks and Deliverables associated with CONVERGE involve further advancing the Social Science Extreme Events Research and the Interdisciplinary Science and Engineering Extreme Events Research platforms and networks that we are establishing for social science and interdisciplinary research communities.

Slide #7

If you are interested in learning more about the background and motivation for SSEER, I hope you will read the brief statement from Lori, describing SSEER. The link is at the top of the screen.

The form to join SSEER – and the open call to social scientists – has been live since July. Please share the Jon SSEER link with your social science friends and family members! 😊

As of today, nearly 300 social scientists have completed the SSEER survey. This will lead to the first-ever “census” of the social science hazards and disaster research community, and will also allow us to analyze and share information on the various forms of expertise among the community.

SSEER will also fund rapid reconnaissance efforts led by social scientists and among those working in interdisciplinary teams.

Slide #8

Now that the SSEER survey form is live, a next step is to:

Open a call for researchers who are *interested* in joining interdisciplinary reconnaissance teams and to

Develop a database of researchers who have regularly engaged in interdisciplinary hazards and disaster research.

The Science of Team Science will inform all subsequent modules and resources that are developed to help foster interdisciplinary collaboration.

Slide #9

Thank you so much for your time and attention today, and much gratitude to all partners and collaborators, as well as a special thanks to Julio, Robin, and Joy.

If you have questions or comments, you can contact Lori at Lori.Peek@Colorado.edu.